

MASTER**PROFI**

		PROFI 7.0	PROFI 7	PROFI 7 E	PROFI 7 Z.E.	PROFI 7 MF	PROFI 7 M.F.E	PROFI 7 M.F.Z.E.
Suction unit		1-stage bypass turbine	1-stage bypass turbine	1-stage bypass turbine	1-stage bypass turbine	1-stage bypass turbine	1-stage bypass turbine	1-stage bypass turbine
Power	[W]	1200	1200	1200	1200	1200	1200	1200
Vacuum	[kPa]	25	25	25	25	25	25	25
Airflow	[l/s]	65	65	65	65	65	65	65
4,8 bar pump		+	-	-	-	-	-	-
Manual cord rewind		+	-	-	+	-	-	+
Capacity	[l]	15	15	15	15	15	15	15
Shockproof tank		+	+	+	+	+	+	+
Power cord length	[m]	12	7	7	12	7	7	12
Rubber-tired wheels		+	+	+	+	+	+	+
Weight		10,5	8	8	9	8,3	8,3	9,5
Dimensions	[length x width x height]	35 x 35 x 52,5	35 x 35 x 52,5	35 x 35 x 52,5	40 x 35 x 52,5	35 x 35 x 53,5	35 x 35 x 53,5	40 x 35 x 53,5
Electric tool socket		+	-	+	+	-	+	+

PROFI 7.0 extractor (cord rewind, electric socket, ULKA pump)

PROFI 7 basic wet & dry vacuum cleaner

PROFI 7 E wet&dry, electric socket

PROFI 7 Z.E wet & dry, cord rewind and electric socket

PROFI 7 MF dry vacuum cleaner with MultiFilter

PROFI 7 M.F.E dry vacuum cleaner with MultiFilter and electric socket

PROFI 7 M.F.Z.E dry vacuum cleaner with MultiFilter, cord rewind and electric socket

More info at www.masterprofi.eu

MULTI-PURPOSE VACUUM CLEANER PROFI 7

**WASHING /
WET AND DRY /
DRY VACUUM CLEANER**

Ametek bypass motor



EPA filter



Water system



Transparent tank
for easy water/dirt
level control



Manual rewind



Electric tool socket



ULKA pump

Sturdy construction
and mobility
with both ball bearing
and metal axle wheels

PROFESSIONAL VACUUM CLEANERS

More info at
www.masterprofi.eu

PROFI 7.0 WITH PROFI 55 POWER HEAD

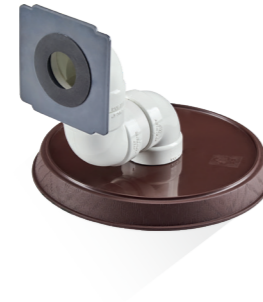
PROFESSIONAL CARPET CLEANER SET

The pump pushes soapy water from the back container and sprays it through two valves on the bottom of the power head. The big brush inside sweeps the surface beneath, while the suction nozzle vacuums water and dirt into the tank. Ideal for different kinds of carpets.



WATER FILTER

For dry vacuuming. Instead of a dust bag, the vacuum cleaner can be equipped with a water filter. Water filters the vacuumed air eliminating the need for a bag.



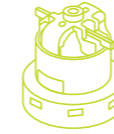
MULTIFILTER

A multifilter is furnished with tubes made from a special material, coated with an anti-adhesive (PTFE). Inside the tubes, there are springs selected for each vacuum cleaner's suction power. During work, dirt particles cover the tubes causing the springs to contract. When the suction pressure briefly drops, the springs unfold, shaking off the dust to the bottom of a container. The whole process is continuous and the vacuum cleaner does not lose the total suction power throughout.



PROFI 7

Ametek bypass motor



EPA filter



Water system

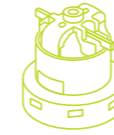


7 m power cord (no rewind)

15 l synthetic dust bag

PROFI 7 E

Ametek bypass motor



EPA filter



Water system



7 m power cord (no rewind)

15 l synthetic dust bag

Electric tool socket up to 2200 W

PROFI 7 Z.E.



Ametek bypass motor



EPA filter



Water system



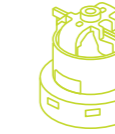
12 m power cord (manual rewind)

15 l synthetic dust bag

Electric tool socket up to 2200 W

PROFI 7 MF

Ametek bypass motor



Multifilter



7 m power cord (no rewind)

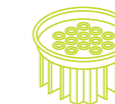
15 l plastic tank

PROFI 7 MF.E

Ametek bypass motor



Multifilter



7 m power cord (no rewind)

15 l plastic tank

Electric tool socket up to 2200 W

PROFI 7 MF.Z.E.



Ametek bypass motor



Multifilter



12 m power cord (manual rewind)

15 l plastic tank

Electric tool socket up to 2200 W